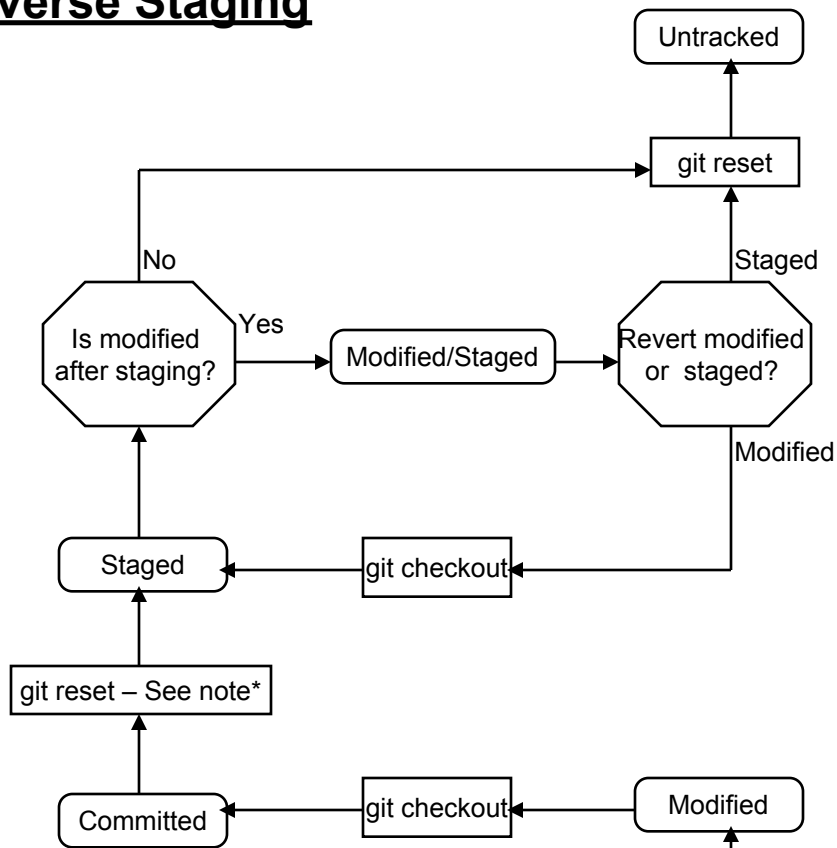
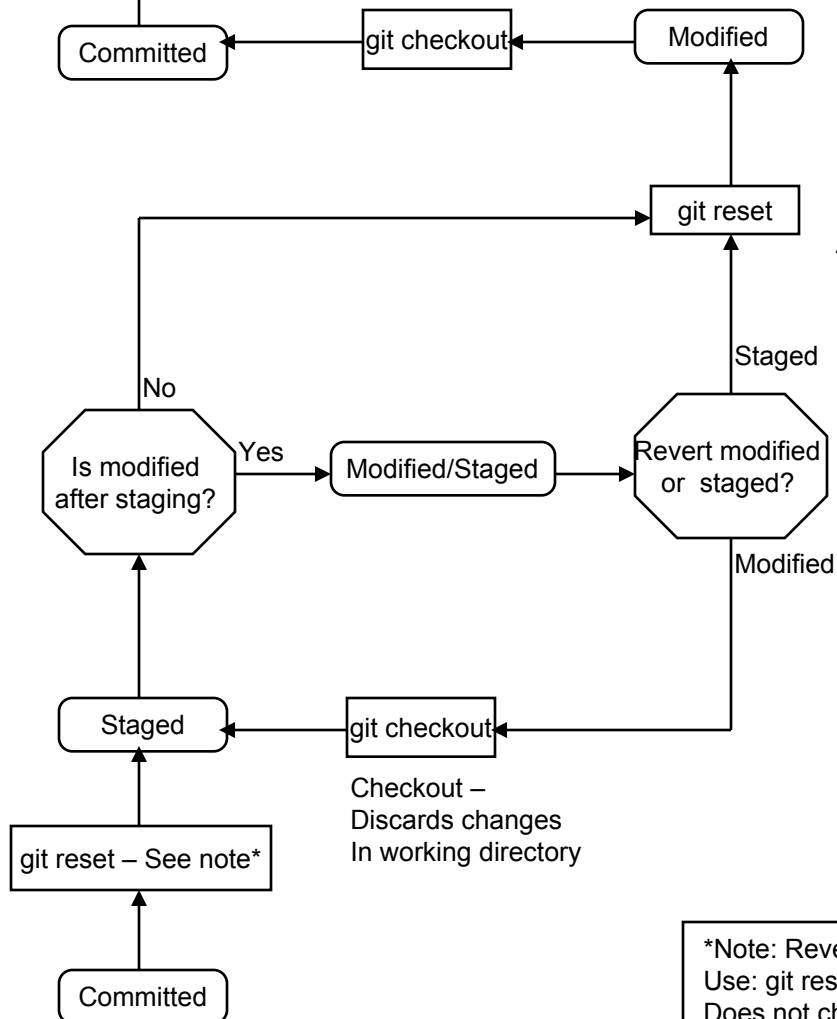


Reverse Staging



Reset (Mixed) - Update ref and index
 Do not change working directory
 During reversion:
 Added file will be lost
 Modified file will remain



Reset (Mixed) - Update ref and index
 Do not change working directory
 During reversion:
 Added file will be lost
 Modified file will remain

Checkout -
 Discards changes
 In working directory

*Note: Revert from Committed->Staged state.
 Use: git reset --soft HEAD^
 Does not change the working dir.

Forward Staging

